

## HIGHLIGHTS OF PRESCRIBING INFORMATION

These highlights do not include all the information needed to use COMETRIQ safely and effectively. See full prescribing information for COMETRIQ.

### COMETRIQ® (cabozantinib) capsules, for oral use

Initial U.S. Approval: 2012

#### RECENT MAJOR CHANGES

Warnings and Precautions, Hypocalcemia (5.12) 08/2023

#### INDICATIONS AND USAGE

COMETRIQ is a kinase inhibitor indicated for the treatment of patients with progressive, metastatic medullary thyroid cancer (MTC). (1)

#### DOSAGE AND ADMINISTRATION

- Recommended Dose: 140 mg orally, once daily. (2.1)
- Instruct patients not to eat for at least 2 hours before and at least 1 hour after taking COMETRIQ. (2.1).
- Do NOT substitute COMETRIQ capsules with cabozantinib tablets. (2.1)
- Hepatic Impairment: The recommended starting dose of COMETRIQ is 80 mg in patients with mild or moderate hepatic impairment. (2.1)

#### DOSAGE FORMS AND STRENGTHS

Capsules: 20 mg and 80 mg (3)

#### CONTRAINDICATIONS

None (4)

#### WARNINGS AND PRECAUTIONS

- Perforations and Fistulas: Monitor for symptoms. Discontinue COMETRIQ for Grade 4 fistula or perforation. (5.1)
- Hemorrhage: Do not administer COMETRIQ if recent history of hemorrhage. (5.2)
- Thrombotic Events: Discontinue COMETRIQ for myocardial infarction or serious arterial or venous thromboembolic events. (5.3)
- Impaired Wound Healing: Withhold COMETRIQ for at least 3 weeks before elective surgery. Do not administer for at least 2 weeks following major surgery and until adequate wound healing. The safety of resumption of COMETRIQ after resolution of wound healing complications has not been established. (5.4)
- Hypertension and hypertensive crisis: Monitor blood pressure regularly. Interrupt for hypertension that is not adequately controlled with anti-hypertensive therapy. Discontinue COMETRIQ for hypertensive crisis or

severe hypertension that cannot be controlled with anti-hypertensive therapy. (5.5)

- Osteonecrosis of the Jaw (ONJ): Withhold COMETRIQ for at least 3 weeks prior to invasive dental procedure and for development of ONJ. (5.6)
- Diarrhea: May be severe. Interrupt COMETRIQ immediately until diarrhea resolves or decreases to Grade 1. Recommend standard antidiarrheal treatments. (5.7)
- Palmar-Plantar Erythrodysesthesia (PPE): Interrupt COMETRIQ until PPE resolves or decreases to Grade 1. (5.8)
- Proteinuria: Monitor urine protein. Discontinue for nephrotic syndrome. (5.9)
- Reversible Posterior Leukoencephalopathy Syndrome (RPLS): Discontinue COMETRIQ. (5.10)
- Embryo-Fetal Toxicity: Can cause fetal harm. Advise females of reproductive potential of the potential risk to a fetus and to use effective contraception. (5.11, 8.1, 8.3)
- Hypocalcemia: Monitor blood calcium levels and replace calcium as necessary during treatment. Withhold COMETRIQ and resume at reduced dose upon recovery or permanently discontinue COMETRIQ depending on severity. (5.12)

#### ADVERSE REACTIONS

- The most common adverse reactions ( $\geq 25\%$ ) are diarrhea, stomatitis, palmar-plantar erythrodysesthesia (PPE), decreased weight, decreased appetite, nausea, fatigue, oral pain, hair color changes, dysgeusia, hypertension, abdominal pain, and constipation.
- The most common laboratory abnormalities ( $\geq 25\%$ ) are increased AST, increased ALT, lymphopenia, increased alkaline phosphatase, hypocalcemia, neutropenia, thrombocytopenia, hypophosphatemia, and hyperbilirubinemia. (6.1)

To report SUSPECTED ADVERSE REACTIONS, contact Exelixis, Inc. at 1-855-500-3935 or FDA at 1-800-FDA-1088 or [www.fda.gov/medwatch](http://www.fda.gov/medwatch).

#### DRUG INTERACTIONS

- Strong CYP3A4 Inhibitors: Reduce the COMETRIQ dosage. (2.2, 7.1)
- Strong CYP3A4 Inducers: Increase the COMETRIQ dosage. (2.2, 7.2)

#### USE IN SPECIFIC POPULATIONS

- Lactation: Advise not to breastfeed. (8.2)

See 17 for PATIENT COUNSELING INFORMATION and FDA-approved patient labeling

Revised: 08/2023

## FULL PRESCRIBING INFORMATION: CONTENTS\*

### 1 INDICATIONS AND USAGE

### 2 DOSAGE AND ADMINISTRATION

- 2.1 Recommended Dosage
- 2.2 Dosage Modifications for Adverse Reactions
- 2.3 Dosage Modifications For Coadministration With Strong CYP3A4 Inhibitors
- 2.4 Dosage Modifications For Coadministration With Strong CYP3A4 Inducers
- 2.5 Dosage Modifications for Patients with Hepatic Impairment

### 3 DOSAGE FORMS AND STRENGTHS

### 4 CONTRAINDICATIONS

### 5 WARNINGS AND PRECAUTIONS

- 5.1 Perforations and Fistulas
- 5.2 Hemorrhage
- 5.3 Thrombotic Events
- 5.4 Impaired Wound Healing
- 5.5 Hypertension and Hypertensive Crisis
- 5.6 Osteonecrosis of the Jaw
- 5.7 Diarrhea
- 5.8 Palmar-Plantar Erythrodysesthesia
- 5.9 Proteinuria
- 5.10 Reversible Posterior Leukoencephalopathy Syndrome
- 5.11 Embryo-Fetal Toxicity
- 5.12 Hypocalcemia

### 6 ADVERSE REACTIONS

6.1 Clinical Trial Experience

6.2 Postmarketing Experience

### 7 DRUG INTERACTIONS

- 7.1 Effect of CYP3A4 Inhibitors
- 7.2 Effect of CYP3A4 Inducers
- 7.3 Effect of MRP2 Inhibitors

### 8 USE IN SPECIFIC POPULATIONS

- 8.1 Pregnancy
- 8.2 Lactation
- 8.3 Females and Males of Reproductive Potential
- 8.4 Pediatric Use
- 8.5 Geriatric Use
- 8.6 Hepatic Impairment
- 8.7 Renal Impairment

### 10 OVERDOSAGE

### 11 DESCRIPTION

### 12 CLINICAL PHARMACOLOGY

- 12.1 Mechanism of Action
- 12.2 Pharmacodynamics
- 12.3 Pharmacokinetics

### 13 NONCLINICAL TOXICOLOGY

- 13.1 Carcinogenesis, Mutagenesis, Impairment of Fertility

### 14 CLINICAL STUDIES

### 16 HOW SUPPLIED/STORAGE AND HANDLING

### 17 PATIENT COUNSELING INFORMATION

\*Sections or subsections omitted from the Full Prescribing information are not listed.

## FULL PRESCRIBING INFORMATION

### 1 INDICATIONS AND USAGE

COMETRIQ is indicated for the treatment of patients with progressive, metastatic medullary thyroid cancer (MTC).

### 2 DOSAGE AND ADMINISTRATION

#### 2.1 Recommended Dosage

Do NOT substitute COMETRIQ capsules with cabozantinib tablets.

The recommended daily dose of COMETRIQ is 140 mg once daily without food until disease progression or unacceptable toxicity. Instruct patients not to eat for at least 2 hours before and at least 1 hour after taking COMETRIQ.

Swallow COMETRIQ capsules whole. Do not open COMETRIQ capsules.

Do not take a missed dose within 12 hours of the next dose.

Do not ingest foods (e.g., grapefruit, grapefruit juice) or nutritional supplements that are known to inhibit cytochrome P450 while taking COMETRIQ.

#### 2.2 Dosage Modifications for Adverse Reactions

Withhold COMETRIQ for NCI CTCAE Grade 4 hematologic adverse reactions, Grade 3 or greater non-hematologic adverse reactions, intolerable Grade 2 adverse reactions, or osteonecrosis of the jaw.

Upon resolution/improvement of the adverse reaction (i.e., return to baseline or resolution to Grade 1), reduce the dose as follows:

- If previously receiving 140 mg daily dose, resume treatment at 100 mg daily
- If previously receiving 100 mg daily dose, resume treatment at 60 mg daily
- If previously receiving 60 mg daily dose, resume at 60 mg if tolerated, otherwise, discontinue COMETRIQ

Permanently discontinue COMETRIQ for any of the following:

- development of gastrointestinal (GI) perforation or Grade 4 fistula
- severe hemorrhage
- acute myocardial infarction or arterial or venous thromboembolic events that require medical intervention
- nephrotic syndrome
- severe hypertension that cannot be controlled with anti-hypertensive therapy or Grade 4 hypertension

- reversible posterior leukoencephalopathy syndrome

### **2.3 Dosage Modifications For Coadministration With Strong CYP3A4 Inhibitors**

Reduce the daily COMETRIQ dose by 40 mg (for example, from 140 mg to 100 mg daily or from 100 mg to 60 mg daily). Resume the dose that was used prior to initiating the CYP3A4 inhibitor 2 to 3 days after discontinuation of the strong inhibitor [see *Drug Interactions (7.1)*, *Clinical Pharmacology (12.3)*].

### **2.4 Dosage Modifications For Coadministration With Strong CYP3A4 Inducers**

Increase the daily COMETRIQ dose by 40 mg (for example, from 140 mg to 180 mg daily or from 100 mg to 140 mg daily) as tolerated. Resume the dose that was used prior to initiating the CYP3A4 inducer 2 to 3 days after discontinuation of the strong inducer. The daily dose of COMETRIQ should not exceed 180 mg [see *Drug Interactions (7.2)*, *Clinical Pharmacology (12.3)*].

### **2.5 Dosage Modifications for Patients with Hepatic Impairment**

The recommended starting dose of COMETRIQ for patients with mild to moderate hepatic impairment is 80 mg [see *Use in Specific Populations (8.6)*, *Clinical Pharmacology (12.3)*].

## **3 DOSAGE FORMS AND STRENGTHS**

Capsules:

- 20-mg gelatin capsules, grey with “XL184 20mg” printed in black on the body of the capsule.
- 80-mg gelatin capsules, Swedish orange with “XL184 80mg” printed in black on the body of the capsule.

## **4 CONTRAINDICATIONS**

None

## **5 WARNINGS AND PRECAUTIONS**

### **5.1 Perforations and Fistulas**

Gastrointestinal (GI) perforations and fistulas, including fatal cases, were reported in 3% and 1% of COMETRIQ-treated patients (N=214), respectively. Non-GI fistulas including tracheal/esophageal, including fatal cases, were reported in 4% of COMETRIQ-treated patients.

Monitor patients for symptoms of perforations and fistulas, including abscess and sepsis. Discontinue COMETRIQ in patients who experience a Grade 4 fistula or a GI perforation [see *Dosage and Administration (2.2)*].

## 5.2 Hemorrhage

Severe and fatal hemorrhage occurred with COMETRIQ. The incidence of Grade  $\geq 3$  hemorrhagic events was higher in COMETRIQ-treated patients compared with placebo (3% vs. 1%).

Discontinue COMETRIQ for Grade 3 or 4 hemorrhage [see *Dosage and Administration (2.2)*]. Do not administer COMETRIQ to patients with a recent history of hemorrhage, including hemoptysis, hematemesis, or melena.

## 5.3 Thrombotic Events

COMETRIQ increased the incidence of thrombotic events (venous thromboembolism: 6% vs. 3% and arterial thromboembolism: 2% vs. 0% in COMETRIQ-treated and placebo-treated patients, respectively).

Discontinue COMETRIQ in patients who develop an acute myocardial infarction or arterial or venous thromboembolic events that require medical intervention [see *Dosage and Administration (2.2)*].

## 5.4 Impaired Wound Healing

Wound complications have been reported with COMETRIQ. Withhold COMETRIQ for at least 3 weeks prior to elective surgery. Do not administer COMETRIQ for at least 2 weeks after major surgery and until adequate wound healing. The safety of resumption of COMETRIQ after resolution of wound healing complications has not been established.

## 5.5 Hypertension and Hypertensive Crisis

COMETRIQ can cause hypertension, including hypertensive crisis. Joint National Committee on Prevention, Detection, Evaluation, and Treatment of High Blood Pressure (modified JNC criteria) stage 1 or 2 hypertension was identified in 61% in COMETRIQ-treated patients compared with 30% of placebo-treated patients in the randomized trial [see *Adverse Reactions (6.1)*].

Do not initiate COMETRIQ in patients with uncontrolled hypertension. Monitor blood pressure regularly during COMETRIQ treatment. Withhold COMETRIQ for hypertension that is not adequately controlled with medical management; when controlled, resume COMETRIQ at a reduced dose. Discontinue COMETRIQ for severe hypertension that cannot be controlled with anti-hypertensive therapy and for hypertensive crisis [see *Dosage and Administration (2.2)*].

## 5.6 Osteonecrosis of the Jaw

Osteonecrosis of the jaw (ONJ) occurred in 1% of COMETRIQ-treated patients. ONJ can manifest as jaw pain, osteomyelitis, osteitis, bone erosion, tooth or periodontal infection, toothache, gingival ulceration or erosion, persistent jaw pain or slow healing of the mouth or jaw

after dental surgery. Perform an oral examination prior to initiation of COMETRIQ and periodically during COMETRIQ therapy. Advise patients regarding good oral hygiene practices. Withhold COMETRIQ treatment for at least 3 weeks prior to scheduled dental surgery, or invasive dental procedures, if possible. Withhold COMETRIQ for development of ONJ until complete resolution [see *Dosage and Administration (2.2)*].

## **5.7 Diarrhea**

Diarrhea occurred in 63% of patients treated with COMETRIQ. Grade 3-4 diarrhea occurred in 16% of patients treated with COMETRIQ [see *Adverse Reactions (6.1)*].

Withhold COMETRIQ until improvement to Grade 1 and resume COMETRIQ at a reduced dose for intolerable Grade 2 diarrhea, Grade 3 diarrhea that cannot be managed with standard antidiarrheal treatments, or Grade 4 diarrhea.

## **5.8 Palmar-Plantar Erythrodysesthesia**

Palmar-plantar erythrodysesthesia (PPE) occurred in 50% of patients treated with COMETRIQ, including 13% Grade 3 [see *Adverse Reactions (6.1)*].

Withhold COMETRIQ until improvement to Grade 1 and resume COMETRIQ at a reduced dose for intolerable Grade 2 PPE or Grade 3 PPE.

## **5.9 Proteinuria**

Proteinuria was observed in 2% of patients receiving COMETRIQ, including one with nephrotic syndrome. Monitor urine protein regularly during COMETRIQ treatment. Discontinue COMETRIQ in patients who develop nephrotic syndrome.

## **5.10 Reversible Posterior Leukoencephalopathy Syndrome**

Reversible Posterior Leukoencephalopathy Syndrome (RPLS), a syndrome of subcortical vasogenic edema diagnosed by characteristic finding on MRI, occurred in one (<1%) patient. Perform an evaluation for RPLS in any patient presenting with seizures, headache, visual disturbances, confusion or altered mental function. Discontinue COMETRIQ in patients who develop RPLS [see *Dosage and Administration (2.2)*].

## **5.11 Embryo-Fetal Toxicity**

Based on data from animal studies and its mechanism of action, COMETRIQ can cause fetal harm when administered to a pregnant woman. Cabozantinib administration to pregnant animals during organogenesis resulted in embryoletality at exposures below those occurring clinically at the recommended dose, and in increased incidences of skeletal variations in rats and visceral variations and malformations in rabbits. Advise pregnant women of the potential risk to a fetus. Advise females of reproductive potential to use effective contraception during treatment with COMETRIQ and for 4 months after the last dose [see *Use in Specific Populations (8.1), (8.3), and Clinical Pharmacology (12.1)*].

## 5.12 Hypocalcemia

COMETRIQ can cause hypocalcemia. Based on the safety population [see *Clinical Trial Experience (6.1)*], hypocalcemia occurred in 52% of patients treated with COMETRIQ, including Grade 3 or 4 in 12% of patients.

Monitor blood calcium levels and replace calcium as necessary during treatment. Withhold and resume at a reduced dose upon recovery or discontinue COMETRIQ depending on severity [see *Dosage and Administration (2.2)*].

## 6 ADVERSE REACTIONS

The following clinically significant adverse reactions are discussed elsewhere in the labeling:

- Perforations and Fistula [see *Warnings and Precautions (5.1)*]
- Hemorrhage [see *Warnings and Precautions (5.2)*]
- Thromboembolic Events [see *Warnings and Precautions (5.3)*]
- Impaired Wound Healing [see *Warnings and Precautions (5.4)*]
- Hypertension and Hypertensive Crisis [see *Warnings and Precautions (5.5)*]
- Osteonecrosis of the Jaw [see *Warnings and Precautions (5.6)*]
- Diarrhea [see *Warnings and Precautions (5.7)*]
- Palmar-Plantar Erythrodysesthesia [see *Warnings and Precautions (5.8)*]
- Proteinuria [see *Warnings and Precautions (5.9)*]
- Reversible Posterior Leukoencephalopathy Syndrome [see *Warnings and Precautions (5.10)*]
- Hypocalcemia [see *Warnings and Precautions (5.12)*]

### 6.1 Clinical Trial Experience

Because clinical trials are conducted under widely varying conditions, adverse reaction rates observed in the clinical trials of a drug cannot be directly compared to rates in the clinical trials of another drug and may not reflect the rates observed in practice.

The safety of COMETRIQ was evaluated in 330 patients with progressive metastatic medullary thyroid cancer randomized to receive 140 mg COMETRIQ (n = 214) or placebo (n = 109) administered daily until disease progression or intolerable toxicity in a randomized, double-blind, controlled trial (Study 1) [see *Clinical Studies (14)*]. The data described below reflect a median exposure to COMETRIQ for 204 days. The population exposed to COMETRIQ was 70% male, 90% white, and had a median age of 55 years.

Fatal adverse reactions occurred in 6% of patients receiving COMETRIQ and resulted from hemorrhage, pneumonia, septicemia, fistulas, cardiac arrest, respiratory failure, and unspecified death. Fatal adverse reactions occurred in 5% of patients receiving placebo and resulted from septicemia, pneumonia, and general deterioration.

The COMETRIQ dose was reduced in 79% of patients receiving COMETRIQ and in 9% of patients receiving placebo. The median number of dosing delays was one in patients receiving COMETRIQ and in no patients receiving placebo. Adverse reactions led to study treatment discontinuation in 16% of patients receiving COMETRIQ. The most frequent adverse reactions

leading to permanent discontinuation of COMETRIQ were: hypocalcemia, increased lipase, PPE, diarrhea, fatigue, hypertension, nausea, pancreatitis, tracheal fistula formation and vomiting.

Increased levels of thyroid stimulating hormone (TSH) were observed in 57% of patients receiving COMETRIQ after the first dose compared to 19% of patients receiving placebo (regardless of baseline value). Ninety-two percent (92%) of patients on the COMETRIQ arm had a prior thyroidectomy, and 89% were taking thyroid hormone replacement prior to the first dose.

Adverse reactions which occurred in  $\geq 25\%$  of COMETRIQ-treated patients occurring more frequently in the COMETRIQ arm with a between-arm difference of  $\geq 5\%$  included, in order of decreasing frequency: diarrhea, stomatitis, palmar-plantar erythrodysesthesia (PPE), decreased weight, decreased appetite, nausea, fatigue, oral pain, hair color changes, dysgeusia, hypertension, abdominal pain, and constipation. The most common laboratory abnormalities ( $\geq 25\%$ ) were increased AST, increased ALT, lymphopenia, increased ALP, hypocalcemia, neutropenia, thrombocytopenia, hypophosphatemia, and hyperbilirubinemia. Grade 3-4 adverse reactions and laboratory abnormalities which occurred in  $\geq 5\%$  of COMETRIQ-treated patients occurring more frequently in the COMETRIQ arm with a between-arm difference of  $\geq 2\%$  included, in order of decreasing frequency; diarrhea, PPES, lymphopenia, hypocalcemia, fatigue, hypertension, asthenia, increased ALT, decreased weight, stomatitis, and decreased appetite (Table 1 and Table 2 summarize the adverse reactions and laboratory abnormalities reported in Study 1).

<b>Table 1. Selected Adverse Reactions Occurring at a Higher Incidence in COMETRIQ-Treated Patients (Study 1)</b>				
<b>[Between Arm Difference of <math>\geq 5\%</math> (All Grades)<sup>1</sup> or <math>\geq 2\%</math> (Grade 3-4)]</b>				
System Organ Class/ Preferred Terms	COMETRIQ (n=214)		Placebo (n=109)	
	All Grades (%)	Grade 3-4 (%)	All Grades (%)	Grade 3-4 (%)
<b>GASTROINTESTINAL DISORDERS</b>				
Diarrhea	63	16	33	2
Stomatitis <sup>2</sup>	51	5	6	0
Nausea	43	1	21	0
Oral pain <sup>3</sup>	36	2	6	0
Constipation	27	0	6	0
Abdominal pain <sup>4</sup>	27	3	13	1
Vomiting	24	2	2	1
Dysphagia	13	4	6	1
Dyspepsia	11	0	0	0
Hemorrhoids	9	0	3	0
<b>SKIN AND SUBCUTANEOUS TISSUE DISORDERS</b>				
PPE <sup>5</sup>	50	13	2	0
Hair color changes/ depigmentation, graying	34	0	1	0
Rash	19	1	10	0
Dry skin	19	0	3	0

<b>Table 1. Selected Adverse Reactions Occurring at a Higher Incidence in COMETRIQ-Treated Patients (Study 1)</b>				
<b>[Between Arm Difference of <math>\geq 5\%</math> (All Grades)<sup>1</sup> or <math>\geq 2\%</math> (Grade 3-4)]</b>				
System Organ Class/ Preferred Terms	COMETRIQ (n=214)		Placebo (n=109)	
	All Grades (%)	Grade 3-4 (%)	All Grades (%)	Grade 3-4 (%)
Alopecia	16	0	2	0
Erythema	11	1	2	0
Hyperkeratosis	7	0	0	0
<b>INVESTIGATIONS</b>				
Decreased weight	48	5	10	0
<b>METABOLISM AND NUTRITION DISORDERS</b>				
Decreased appetite	46	5	16	1
Dehydration	7	2	2	1
<b>GENERAL DISORDERS AND ADMINISTRATION SITE CONDITIONS</b>				
Fatigue	41	9	28	3
Asthenia	21	6	15	1
<b>NERVOUS SYSTEM DISORDERS</b>				
Dysgeusia	34	0	6	0
Headache	18	0	8	0
Dizziness	14	0	7	0
Paresthesia	7	0	2	0
Peripheral sensory neuropathy	7	0	0	0
Peripheral neuropathy	5	0	0	0
<b>VASCULAR DISORDERS</b>				
Hypertension	33	8	4	0
Hypotension	7	1	0	0
<b>RESPIRATORY, THORACIC AND MEDIASTINAL DISORDERS</b>				
Dysphonia	20	0	9	0
<b>MUSCULOSKELETAL AND CONNECTIVE TISSUE DISORDERS</b>				
Arthralgia	14	1	7	0
Muscle spasms	12	0	5	0
Musculoskeletal chest pain	9	1	4	0
<b>PSYCHIATRIC DISORDERS</b>				
Anxiety	9	0	2	0
<sup>1</sup> National Cancer Institute Common Terminology Criteria for Adverse Events Version 3.0 <sup>2</sup> Includes the following terms: stomatitis, aphthous stomatitis, mouth ulceration, mucosal inflammation <sup>3</sup> Includes the following terms: oral pain, oropharyngeal pain, glossitis, burning mouth syndrome, glossodynia <sup>4</sup> Includes the following terms: abdominal pain, abdominal pain lower, abdominal pain upper, abdominal rigidity, abdominal tenderness, esophageal pain <sup>5</sup> Palmar-plantar erythrodysesthesia				

Test	COMETRIQ (n=214)		Placebo (n=109)	
	All Grades (%)	Grade 3-4 (%)	All Grades (%)	Grade 3-4 (%)
<b>Chemistries</b>				
Increased AST	86	3	35	2
Increased ALT	86	6	41	2
Increased ALP	52	3	35	3
Hypocalcemia	52	12	27	3
Hypoalbuminemia	43	2	16	0
Hypophosphatemia	28	3	10	1
Hyperbilirubinemia	25	2	14	5
Hypomagnesemia	19	1	4	0
Hypokalemia	18	4	9	3
Hyponatremia	10	2	5	0
<b>Hematologic</b>				
Lymphopenia	53	16	51	11
Neutropenia	35	3	15	2
Thrombocytopenia	35	0	4	3

ALT, alanine aminotransferase; ALP, alkaline phosphatase; AST, aspartate aminotransferase

Nearly all COMETRIQ-treated patients (96% vs. 84% placebo) experienced elevated blood pressure and there was a doubling in the incidence of overt hypertension in COMETRIQ-treated patients over placebo-treated patients (61% vs. 30%) according to modified Joint National Committee on Prevention, Detection, Evaluation, and Treatment of High Blood Pressure (JNC) staging criteria. No patients developed malignant hypertension.

Hypertension, JNC <sup>1</sup> Stage <sup>2</sup>	COMETRIQ N = 211 <sup>3</sup> (%)	Placebo N = 107 <sup>3</sup> (%)
Normal: Grade 0: Systolic < 120 mmHg and Diastolic < 80 mmHg	4	15
Pre-hypertension: Systolic $\geq 120$ mmHg or Diastolic $\geq 80$ mmHg	34	54
Stage 1: Systolic $\geq 140$ mmHg or Diastolic $\geq 90$ mmHg	46	25
Stage 2: Systolic $\geq 160$ mmHg or Diastolic $\geq 100$ mmHg	15	5
Malignant: Diastolic $\geq 120$ mmHg	0	0

<sup>1</sup>Joint National Committee on Prevention, Detection, Evaluation, and Treatment of High Blood Pressure, JAMA 2003; 289:2560. Criteria applied were modified, as multiple readings were not available per timepoint, and therefore not averaged.  
<sup>2</sup>Patients classified by highest category based on all recorded blood pressure readings beginning after the first dose through 30 days after last dose.  
<sup>3</sup>Patients with at least two blood pressure measurements after the first dose

Other clinically important adverse reactions (all grades) that were reported in clinical trials include: hepatitis cholestatic (<1%).

## 6.2 Postmarketing Experience

The following adverse reactions have been identified during postapproval use of COMETRIQ. Because these reactions are reported voluntarily from a population of uncertain size, it is not always possible to reliably estimate their frequency or establish a causal relationship to drug exposure.

**Hematology:** A case of supratherapeutic international normalized ratio (INR) and epistaxis during concomitant use of warfarin

**Musculoskeletal and Connective Tissue Disorders:** Extremity pain

**Vascular Disorders:** Arterial (including aortic) aneurysms, dissections, and rupture

## 7 DRUG INTERACTIONS

### 7.1 Effect of CYP3A4 Inhibitors

Administration of a strong CYP3A4 inhibitor, ketoconazole to healthy subjects increased single-dose plasma cabozantinib exposure by 38%. Avoid taking a strong CYP3A4 inhibitor (e.g., ketoconazole, itraconazole, clarithromycin, atazanavir, indinavir, nefazodone, nelfinavir, ritonavir, saquinavir, telithromycin, voriconazole) while taking COMETRIQ or reduce the dosage of COMETRIQ if concomitant use with strong CYP3A4 inhibitors cannot be avoided [see *Dosage and Administration (2.2)*, *Clinical Pharmacology (12.3)*].

Avoid ingestion of foods (e.g., grapefruit, grapefruit juice) or nutritional supplements that are known to inhibit cytochrome P450 while taking COMETRIQ.

### 7.2 Effect of CYP3A4 Inducers

Administration of a strong CYP3A4 inducer, rifampin to healthy subjects decreased single-dose plasma cabozantinib exposure by 77%. Avoid chronic co-administration of strong CYP3A4 inducers (e.g., phenytoin, carbamazepine, rifampin, rifabutin, rifapentine, phenobarbital, St. John's Wort) with COMETRIQ or increase the dosage of COMETRIQ if concomitant use with strong CYP3A4 inducers cannot be avoided [see *Dosage and Administration (2.2)*, *Clinical Pharmacology (12.3)*].

### 7.3 Effect of MRP2 Inhibitors

Concomitant administration of MRP2 inhibitors may increase the exposure to cabozantinib. Monitor patients for increased toxicity when MRP2 inhibitors (e.g., abacavir, adefovir, cidofovir, furosemide, lamivudine, nevirapine, ritonavir, probenecid, saquinavir, and tenofovir) are co-administered with COMETRIQ [see *Clinical Pharmacology (12.3)*].

## 8 USE IN SPECIFIC POPULATIONS

### 8.1 Pregnancy

#### Risk Summary

Based on findings from animal studies and its mechanism of action, COMETRIQ can cause fetal harm when administered to a pregnant woman [see *Clinical Pharmacology (12.1)*]. There are no available data in pregnant women to inform the drug-associated risk. In animal developmental and reproductive toxicology studies administration of cabozantinib to pregnant rats and rabbits during organogenesis resulted in embryofetal lethality and structural anomalies at exposures that were below those occurring clinically at the recommended dose (see Data). Advise pregnant women or women of childbearing potential of the potential hazard to a fetus.

The estimated background risk of major birth defects and miscarriage for the indicated population is unknown. In the U.S. general population, the estimated background risk of major birth defects and miscarriage in clinically recognized pregnancies is 2-4% and 15-20%, respectively.

#### Data

##### *Animal Data*

In an embryo-fetal development study in pregnant rats, daily oral administration of cabozantinib throughout organogenesis caused increased embryo-fetal lethality compared to controls at a dose of 0.03 mg/kg (less than 1% of the human exposure by AUC at the 140 mg dose). Findings included delayed ossifications and skeletal variations at a dose of 0.01 mg/kg/day (approximately 0.03% of the human exposure by AUC at the 140 mg dose).

In pregnant rabbits, daily oral administration of cabozantinib throughout organogenesis resulted in findings of visceral malformations and variations including reduced spleen size and missing lung lobe at 3 mg/kg (approximately 11% of the human exposure by AUC at the 140 mg dose).

In a pre- and postnatal study in rats, cabozantinib was administered orally from gestation day 10 through postnatal day 20. Cabozantinib did not produce adverse maternal toxicity or affect pregnancy, parturition or lactation of female rats, and did not affect the survival, growth or postnatal development of the offspring at doses up to 0.3 mg/kg/day (approximately 0.02 times the recommended clinical dose of 140 mg based on body surface area).

### 8.2 Lactation

#### Risk Summary

There is no information regarding the presence of cabozantinib or its metabolites in human milk, or their effects on the breastfed infant, or milk production. Because of the potential for serious adverse reactions in a breastfed infant from COMETRIQ, advise a lactating woman not to breastfeed during treatment with COMETRIQ and for 4 months after the final dose.

### **8.3 Females and Males of Reproductive Potential**

#### Pregnancy Testing

Verify the pregnancy status of females of reproductive potential prior to initiating COMETRIQ [see *Use in Specific Populations (8.1)*].

#### Contraception

COMETRIQ can cause fetal harm when administered to a pregnant woman [see *Use in Specific Populations (8.1)*].

#### *Females*

Advise females of reproductive potential to use effective contraception during treatment with COMETRIQ and for 4 months after the final dose.

#### Infertility

#### *Females and Males*

Based on findings in animals, COMETRIQ may impair fertility in females and males of reproductive potential [see *Nonclinical Toxicology (13.1)*].

### **8.4 Pediatric Use**

The safety and effectiveness of COMETRIQ in pediatric patients have not been studied.

#### Juvenile Animal Toxicity Data

Juvenile rats were administered cabozantinib daily at doses of 1 or 2 mg/kg/day from Postnatal Day 12 (comparable to less than 2 years in humans) through Postnatal Day 35 or 70. Mortalities occurred at doses equal and greater than 1 mg/kg/day (approximately 0.07 times the clinical dose of 140 mg/day based on body surface area). Hypoactivity was observed at both doses tested on Postnatal Day 22. Targets were generally similar to those seen in adult animals, occurred at both doses, and included the kidney (nephropathy, glomerulonephritis), reproductive organs, gastrointestinal tract (cystic dilatation and hyperplasia in Brunner's gland and inflammation of duodenum; and epithelial hyperplasia of colon and cecum), bone marrow (hypocellularity and lymphoid depletion), and liver. Tooth abnormalities and whitening as well as effects on bones including reduced bone mineral content and density, physal hypertrophy, and decreased cortical bone also occurred at all dose levels. Recovery was not assessed at the 2 mg/kg dose level (approximately 0.14 times the clinical dose of 140 mg based on body surface area) due to high levels of mortality. At the low dose level, effects on bone parameters were partially resolved but effects on the kidney and epididymis/testis persisted after treatment ceased.

### **8.5 Geriatric Use**

Clinical studies of COMETRIQ did not include sufficient numbers of patients aged 65 years and over to determine whether they respond differently from younger patients.

### **8.6 Hepatic Impairment**

Increased exposure to cabozantinib has been observed in patients with mild to moderate hepatic impairment. Reduce the starting dose of COMETRIQ in patients with mild (Child-Pugh score

(C-P) A) or moderate (C-P B) hepatic impairment. COMETRIQ is not recommended for use in patients with severe hepatic impairment [see *Dosage and Administration (2.5)*, *Clinical Pharmacology (12.3)*].

## 8.7 Renal Impairment

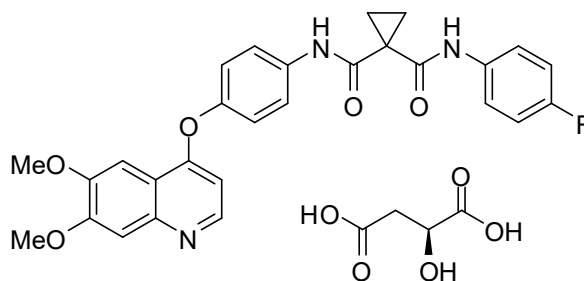
Dosage adjustment is not required in patients with mild or moderate renal impairment. There is no experience with COMETRIQ in patients with severe renal impairment [see *Clinical Pharmacology (12.3)*].

## 10 OVERDOSAGE

One case of overdosage was reported in a patient who inadvertently took twice the intended dose (200 mg daily) for nine days. The patient suffered Grade 3 memory impairment, Grade 3 mental status changes, Grade 3 cognitive disturbance, Grade 2 weight loss, and Grade 1 increase in BUN. The extent of recovery was not documented.

## 11 DESCRIPTION

COMETRIQ is the (*S*)-malate salt of cabozantinib, a kinase inhibitor. Cabozantinib (*S*)-malate is described chemically as *N*-(4-(6,7-dimethoxyquinolin-4-yloxy)phenyl)-*N'*-(4-fluorophenyl)cyclopropane-1,1-dicarboxamide, (2*S*)-hydroxybutanedioate. The molecular formula is  $C_{28}H_{24}FN_3O_5 \cdot C_4H_6O_5$  and the molecular weight is 635.6 Daltons as malate salt. The chemical structure of cabozantinib (*S*)-malate salt is:



Cabozantinib (*S*)-malate salt is a white to off-white solid that is practically insoluble in aqueous media.

COMETRIQ (cabozantinib) capsules for oral use are supplied as printed hard gelatin capsules containing cabozantinib (*S*)-malate equivalent to 20 mg or 80 mg cabozantinib and the following inactive ingredients: silicified microcrystalline cellulose, croscarmellose sodium, sodium starch glycolate, fumed silica, and stearic acid.

The grey gelatin capsule shells contain black iron oxide and titanium dioxide and the Swedish orange gelatin capsule shells contain red iron oxide, and titanium dioxide. The printing ink contains shellac glaze, black iron oxide, *N*-butyl alcohol, isopropyl alcohol, propylene glycol, and ammonium hydroxide.

## 12 CLINICAL PHARMACOLOGY

### 12.1 Mechanism of Action

In vitro biochemical and/or cellular assays have shown that cabozantinib inhibits the tyrosine kinase activity of RET, MET, VEGFR-1, -2 and -3, KIT, TRKB, FLT-3, AXL, ROS1, TYRO3, MER, and TIE-2. These receptor tyrosine kinases are involved in both normal cellular function and pathologic processes such as oncogenesis, metastasis, tumor angiogenesis, drug resistance, and maintenance of the tumor microenvironment.

### 12.2 Pharmacodynamics

#### Cardiac Electrophysiology

The effect of orally administered COMETRIQ 140 mg on QTc interval was evaluated in a randomized, double-blinded, placebo-controlled study in patients with MTC. A mean increase in QTcF of 10 - 15 ms was observed at 4 weeks after initiating COMETRIQ. A concentration-QTc relationship could not be definitively established. Changes in cardiac wave form morphology or new rhythms were not observed. No COMETRIQ-treated patients had a QTcF > 500 ms [see *Clinical Studies (14)*].

### 12.3 Pharmacokinetics

A population pharmacokinetic analysis of cabozantinib was performed using data collected from 289 patients with solid tumors including MTC following oral administration of 140 mg daily doses. Repeat daily dosing of COMETRIQ at 140 mg for 19 days resulted in 4- to 5-fold mean cabozantinib accumulation (based on AUC) compared to a single dose administration; steady state was achieved by Day 15.

#### Absorption

Following oral administration of COMETRIQ, median time to peak cabozantinib plasma concentrations ( $T_{max}$ ) ranged from 2 to 5 hours post-dose.

A 19% increase in the  $C_{max}$  of the tablet formulation (CABOMETYX™) compared to the capsule formulation (COMETRIQ) was observed following a single 140 mg dose. A less than 10% difference in the AUC was observed between cabozantinib tablet (CABOMETYX) and capsule (COMETRIQ) formulations [see *Dosage and Administration (2.1)*].

Cabozantinib  $C_{max}$  and AUC values increased by 41% and 57%, respectively, following a high-fat meal relative to fasted conditions in healthy subjects administered a single 140 mg oral COMETRIQ dose.

#### Distribution

The oral volume of distribution (V/F) of cabozantinib is approximately 349 L. Cabozantinib is highly protein bound in human plasma ( $\geq 99.7\%$ ).

#### Elimination

The predicted effective half-life is approximately 55 hours and the clearance (CL/F) at steady-state is estimated to be 4.4 L/hr.

### *Metabolism*

Cabozantinib is a substrate of CYP3A4 *in vitro*.

### *Excretion*

Approximately 81% of the total administered radioactivity was recovered within a 48-day collection period following a single 140 mg dose of an investigational <sup>14</sup>C-cabozantinib formulation in healthy subjects. Approximately 54% was recovered in feces and 27% in urine. Unchanged cabozantinib accounted for 43% of the total radioactivity in feces and was not detectable in urine following a 72 hour collection.

### Specific Populations

The following patient characteristics did not result in a clinically relevant difference in the pharmacokinetics of cabozantinib: age (20-86 years), sex, race (Whites and non-Whites), or mild to moderate renal impairment (eGFR greater than or equal to 30 mL/min/1.73 m<sup>2</sup> as estimated by MDRD (modification of diet in renal disease equation)). The pharmacokinetics of cabozantinib is unknown in patients with worse than moderate renal impairment (eGFR less than 29 mL/min/1.73m<sup>2</sup>) as estimated by MDRD equation or renal impairment requiring dialysis.

### *Patients with Hepatic Impairment*

Following a single oral 60 mg COMETRIQ, mean AUC<sub>0-inf</sub> for cabozantinib increased by 81% in subjects with mild (Child-Pugh A) hepatic impairment and 63% in subjects with moderate (Child-Pugh B) hepatic impairment compared to subjects with normal hepatic function [see [Dosage and Administration \(2.5\)](#), [Use in Specific Populations \(8.6\)](#)].

The pharmacokinetics of cabozantinib has not been studied in patients with severe (Child-Pugh C) hepatic impairment [see [Use in Specific Populations \(8.6\)](#)].

### Drug Interaction Studies

#### *CYP3A4 Inhibition on Cabozantinib*

Administration of a strong CYP3A4 inhibitor, ketoconazole (400 mg daily for 27 days) to healthy subjects increased single-dose plasma cabozantinib exposure (AUC<sub>0-inf</sub>) by 38%.

#### *CYP3A4 Induction on Cabozantinib*

Administration of a strong CYP3A4 inducer, rifampin (600 mg daily for 31 days) to healthy subjects decreased single-dose plasma cabozantinib exposure (AUC<sub>0-inf</sub>) by 77%.

#### *Cabozantinib on CYP2C8 substrates*

No clinically-significant effect on single-dose rosiglitazone (a CYP2C8 substrate) plasma exposure (C<sub>max</sub> and AUC) was observed when co-administered with cabozantinib at steady-state plasma concentrations (≥ 100 mg/day daily for a minimum of 21 days) in patients with solid tumors.

#### *Gastric pH modifying agents on Cabozantinib*

No clinically-significant effect on plasma cabozantinib exposure (AUC) was observed following co-administration of the proton pump inhibitor (PPI) esomeprazole (40 mg daily for 6 days) with a single dose of 100 mg cabozantinib to healthy volunteers.

## In vitro Studies

### *Metabolic Pathways:*

Inhibition of CYP3A4 reduced the formation of the XL184 *N*-oxide metabolite by >80%. Inhibition of CYP2C9 had a minimal effect on cabozantinib metabolite formation (i.e., a <20% reduction). Inhibition of CYP1A2, CYP2A6, CYP2B6, CYP2C8, CYP2C19, CYP2D6 and CYP2E1 had no effect on cabozantinib metabolite formation.

Although cabozantinib is an inhibitor of CYP2C8 *in vitro*, a clinical study of this potential interaction concluded that concurrent use did not result in a clinically relevant effect on CYP2C8 substrate exposure. Given this finding, other less sensitive substrates of pathways affected by cabozantinib *in vitro* (i.e., CYP2C9, CYP2C19, and CYP3A4) were not evaluated in a clinical study because, although a clinically relevant exposure effect cannot be ruled out, it is unlikely. Cabozantinib does not inhibit CYP1A2 and CYP2D6 isozymes *in vitro*.

Cabozantinib is an inducer of CYP1A1 mRNA; however, the clinical relevance of this finding is unknown. Cabozantinib does not induce CYP1A2, CYP2B6, CYP2C8, CYP2C9, CYP2C19 or CYP3A4.

### *Drug Transporter Systems:*

Cabozantinib is an inhibitor, but not a substrate, of P-gp transport activities and has the potential to increase plasma concentrations of co-administered substrates of P-gp. The clinical relevance of this finding is unknown.

Cabozantinib is a substrate of MRP2 *in vitro* and MRP2 inhibitors have the potential to increase plasma concentrations of cabozantinib. The clinical relevance of this finding is unknown.

## 13 NONCLINICAL TOXICOLOGY

### 13.1 Carcinogenesis, Mutagenesis, Impairment of Fertility

The carcinogenic potential of cabozantinib has been evaluated in two species: rasH2 transgenic mice and Sprague-Dawley rats. In the 2-year rat carcinogenicity study, once daily oral administration of cabozantinib resulted in a statistically significant increase in the incidence of malignant/complex malignant pheochromocytoma in combination with benign pheochromocytoma or in benign pheochromocytoma alone in male rats at a dose of 1 mg/kg (approximately 0.6 times the human exposure by AUC at the recommended 140 mg dose). Cabozantinib was not carcinogenic in a 26-week carcinogenicity study in rasH2 transgenic mice at a slightly higher exposure than the intended human therapeutic exposure.

Cabozantinib was not mutagenic *in vitro* in the bacterial reverse mutation (Ames) assay and was not clastogenic in both the *in vitro* cytogenetic assay using human lymphocytes or in the *in vivo* mouse micronucleus assay.

Based on nonclinical findings, male and female fertility may be impaired by treatment with COMETRIQ. In a fertility study in which cabozantinib was administered to male and female rats at doses of 1, 2.5, and 5 mg/kg/day, male fertility was significantly compromised at doses equal to or greater than 2.5 mg/kg/day (approximately equal to the human exposure by AUC at the recommended dose), with a decrease in sperm counts and reproductive organ weights. In

females, fertility was significantly reduced at doses equal to or greater than 1 mg/kg/day (approximately 50% of the human exposure by AUC at the recommended dose) with a significant decrease in the number of live embryos and a significant increase in pre- and post-implantation losses.

Observations of effects on reproductive tract tissues in general toxicology studies were supportive of effects noted in the dedicated fertility study and included hypospermia and absence of corpora lutea in male and female dogs in a 6-month repeat dose study at exposures equal to 6% and 3%, respectively, the human exposure by AUC at the recommended dose. In addition, female rats administered 5 mg/kg/day for 14 days (approximately equal to the human exposure by AUC at the recommended dose) exhibited ovarian necrosis.

## 14 CLINICAL STUDIES

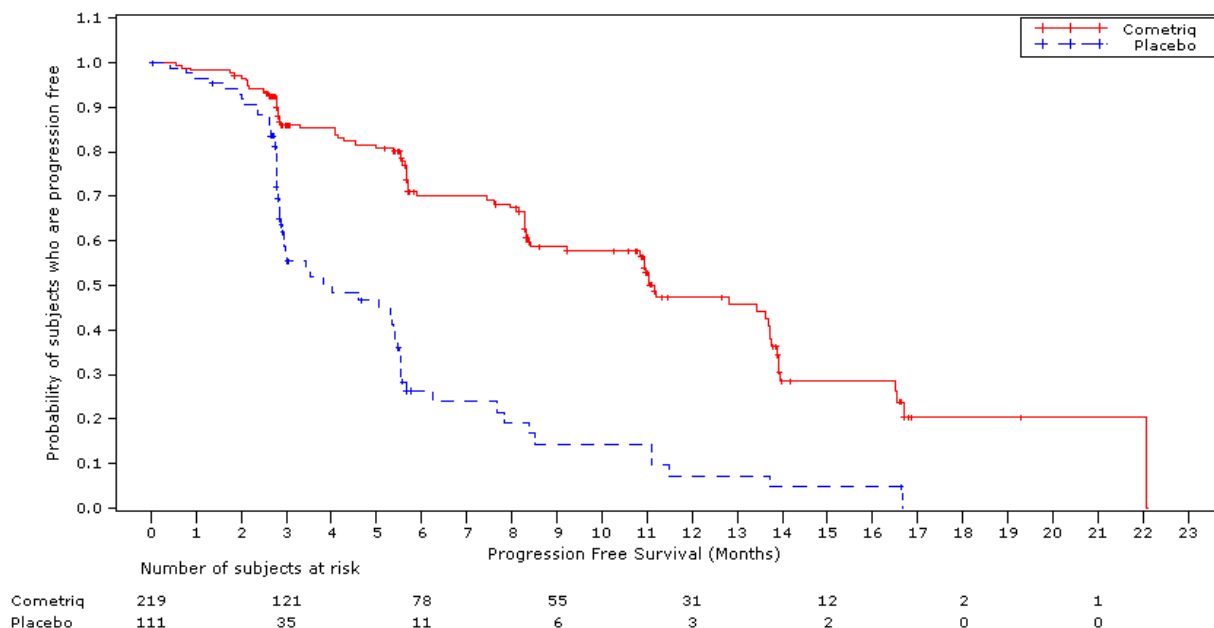
The safety and efficacy of COMETRIQ was assessed in an international, multi-center, randomized, double-blind, controlled trial (Study 1) of 330 patients with metastatic medullary thyroid carcinoma (MTC). Patients were required to have evidence of actively progressive disease within 14 months prior to study entry confirmed by an Independent Radiology Review Committee (IRRC) masked to treatment assignment (89%) or the treating physician (11%). Patients were randomized (2:1) to receive COMETRIQ 140 mg (n = 219) or placebo (n = 111) orally once daily, without food, until disease progression determined by the treating physician or until intolerable toxicity. Randomization was stratified by age ( $\leq 65$  years vs.  $> 65$  years) and prior use of a tyrosine kinase inhibitor (TKI) (yes vs. no). No cross-over was allowed at the time of progression. The main efficacy outcome measures of progression-free survival (PFS), objective response (OR), and response duration were based on IRRC-confirmed events using modified RECIST criteria.

Of 330 patients randomized, 67% were male, the median age was 55 years, 23% were 65 years or older, 89% were white, 54% had a baseline ECOG performance status of 0, and 92% had undergone a thyroidectomy. The *RET* mutation status determined by a research-use assay was positive in 51%, negative in 14%, and was unknown in 35%. Twenty-five percent (25%) had two or more prior systemic therapies and 21% had been previously treated with a TKI.

A statistically significant prolongation in PFS was demonstrated among COMETRIQ-treated patients compared to those receiving placebo [HR 0.28 (95% CI: 0.19, 0.40);  $p < 0.0001$ ], with median PFS times of 11.2 months and 4.0 months in the COMETRIQ and placebo arms, respectively.

Partial responses were observed only among patients in the COMETRIQ arm (27% vs. 0;  $p < 0.0001$ ). The median duration of objective responses was 14.7 months (95% CI: 11.1, 19.3) for patients treated with COMETRIQ. There was no statistically significant difference in overall survival (median OS: 26.6 months in the COMETRIQ arm vs. 21.1 months in the placebo arm [HR = 0.85 (95% CI: 0.64, 1.12),  $p = 0.2409$ ]).

**Figure 1: Progression-Free Survival**



## 16 HOW SUPPLIED/STORAGE AND HANDLING

COMETRIQ 20 mg capsules are supplied as hard gelatin capsules with grey cap and grey body, printed with “XL184 20mg” in black ink and containing cabozantinib (*S*)-malate salt equivalent to 20 mg cabozantinib.

COMETRIQ 80 mg capsules are supplied as hard gelatin capsules with Swedish orange cap and Swedish orange body, printed with “XL184 80mg” in black ink and containing cabozantinib (*S*)-malate salt equivalent to 80 mg cabozantinib.

COMETRIQ capsules are supplied as follows:

### Cartons

- 140 mg daily-dose carton NDC#42388-011-14  
Containing four 140 mg daily-dose blister cards (each blister card contains seven 80-mg and twenty-one 20-mg capsules)
- 100 mg daily-dose carton NDC#42388-012-14  
Containing four 100 mg daily-dose blister cards (each blister card contains seven 80-mg and seven 20-mg capsules)
- 60 mg daily-dose carton NDC#42388-013-14  
Containing four 60 mg daily-dose blister cards (each blister card contains twenty-one 20-mg capsules)

Store COMETRIQ at 20°C to 25°C (68°F to 77°F); excursions are permitted from 15°C to 30°C (59°F to 86°F) [see USP Controlled Room Temperature].

## 17 PATIENT COUNSELING INFORMATION

Advise patients to read the FDA-approved patient labeling (Patient Information).

- **Perforations and fistulas:** Advise patients that gastrointestinal disorders such as diarrhea, nausea, vomiting, and constipation may develop during COMETRIQ treatment and to seek immediate medical attention if they experience persistent or severe abdominal pain because cases of gastrointestinal perforation and fistula have been reported in patients taking COMETRIQ [see *Warnings and Precautions (5.1)*].
- **Hemorrhage:** Instruct patients to contact their healthcare provider to seek immediate medical attention for signs or symptoms of unusual severe bleeding or hemorrhage [see *Warnings and Precautions (5.2)*].
- **Thrombotic events:** Venous and arterial thrombotic events have been reported. Advise patients to report signs or symptoms of an arterial thrombosis. Venous thromboembolic events including pulmonary embolus have been reported. Advise patients to contact their health care provider if new onset of dyspnea, chest pain, or localized limb edema occurs [see *Warnings and Precautions (5.3)*].
- **Impaired wound healing:** Advise patients that COMETRIQ may impair wound healing. Advise patients to inform their healthcare provider of any planned surgical procedure [see *Warnings and Precautions (5.4)*].
- **Hypertension and hypertensive crisis:** Inform patients of the signs and symptoms of hypertension. Advise patients to undergo routine blood pressure monitoring and to contact their health care provider if blood pressure is elevated or if they experience signs or symptoms of hypertension [see *Warnings and Precautions (5.5)*].
- **Osteonecrosis of the jaw:** Advise patients regarding good oral hygiene practices. Advise patients to immediately contact their healthcare provider for signs or symptoms associated with osteonecrosis of the jaw [see *Warnings and Precautions (5.6)*].
- **Diarrhea:** Advise patients to notify their healthcare provider at the first signs of poorly formed or loose stool or an increased frequency of bowel movements [see *Warnings and Precautions (5.7)*].
- **Palmar-plantar erythrodysesthesia:** Advise patients to contact their healthcare provider for progressive or intolerable rash [see *Warnings and Precautions (5.8)*].
- **Reversible posterior leukoencephalopathy syndrome:** Advise patients to immediately contact their health care provider for new onset or worsening neurological function [see *Warnings and Precautions (5.10)*].

- Embryo-fetal toxicity:
  - Advise females of reproductive potential of the potential risk to a fetus. Advise females of reproductive potential to inform their healthcare provider of a known or suspected pregnancy [see *Warnings and Precautions (5.11)*, *Use in Specific Populations (8.1)*].
  - Advise patients of reproductive potential to use effective contraception during treatment with COMETRIQ and for at least 4 months after the final dose [see *Use in Specific Populations (8.3)*].
- Lactation: Advise women not to breastfeed during treatment with COMETRIQ and for 4 months following the last dose [see *Use in Specific Populations (8.2)*].
- Drug interactions: Advise patients to inform their healthcare provider of all prescription or nonprescription medications, vitamins or herbal products. Inform patients to avoid grapefruit, grapefruit juice, and St. John's wort [see *Drug Interactions (7.1)*, *(7.2)*].
- Hypocalcemia: Advise patients that COMETRIQ can cause low calcium levels and that their serum calcium levels should be monitored regularly during treatment. Advise patients to immediately contact their healthcare provider for signs or symptoms of hypocalcemia [see *Warnings and Precautions (5.12)*].

Important administration information:

- Instruct patients not to eat for at least 2 hours before and at least 1 hour after taking COMETRIQ. Instruct patients that COMETRIQ capsules should not be opened or crushed and to take COMETRIQ capsules with a full glass (at least 8 ounces) of water.

Manufactured for Exelixis, Inc. Alameda, CA 94502

**PATIENT INFORMATION**  
**COMETRIQ® (Ko-me-trik)**  
**cabozantinib**  
**capsules**

**What is COMETRIQ?**

COMETRIQ is a prescription medicine used to treat people with medullary thyroid cancer that has spread to other parts of the body.

It is not known if COMETRIQ is safe and effective in children.

**Before you take COMETRIQ, tell your healthcare provider about all of your medical conditions including if you:**

- have a recent history of coughing up blood or bleeding or any unusual bleeding
- have an open or healing wound
- have high blood pressure
- have a low calcium level in your blood (hypocalcemia)
- plan to have any surgery, a dental procedure, or have had a recent surgery. You should stop taking COMETRIQ at least 3 weeks before planned surgery. See “**What are the possible side effects of COMETRIQ?**”
- have liver problems
- are pregnant or plan to become pregnant. COMETRIQ can harm your unborn baby.
  - If you are able to become pregnant, your healthcare provider will check your pregnancy status before you start treatment with COMETRIQ.
  - Females who are able to become pregnant should use effective birth control (contraception) during treatment and for 4 months after the final dose of COMETRIQ.
  - Talk to your healthcare provider about birth control methods that may be right for you.
  - If you become pregnant or think you are pregnant, tell your healthcare provider right away.
- are breastfeeding or plan to breastfeed. It is not known if COMETRIQ passes into your breast milk. Do not breastfeed during treatment and for 4 months after the final dose of COMETRIQ.

**Tell your healthcare provider about all the medicines you take**, including prescription and over-the-counter medicines, vitamins, and herbal supplements. COMETRIQ and certain other medicines may affect each other causing side effects.

**How should I take COMETRIQ?**

- Take COMETRIQ exactly as your healthcare provider tells you to take it.
- **Do not** take COMETRIQ with food. **Do not** eat for at least 2 hours before and at least 1 hour after taking COMETRIQ.
- Swallow COMETRIQ capsules whole with a full glass (at least 8 ounces) of water.
- Do not crush or open COMETRIQ capsules.
- If you miss a dose and your next dose is in less than 12 hours, take your next dose at the normal time. Do not make up the missed dose.

**What should I avoid while taking COMETRIQ?**

**Do not** drink grapefruit juice, eat grapefruit or take supplements that contain grapefruit or St. John’s wort during treatment with COMETRIQ.

**What are the possible side effects of COMETRIQ?**

**COMETRIQ may cause serious side effects, including:**

- **a tear in your stomach or intestinal wall (perforation) or an abnormal connection between 2 parts of your body (fistula)** that may lead to death. Tell your healthcare provider right away if you get tenderness or pain in your stomach-area (abdomen) that is severe or that does not go away.
- **bleeding (hemorrhage).** COMETRIQ can cause severe bleeding that may lead to death. Tell your healthcare provider right away if you get any signs of bleeding during treatment with COMETRIQ, including:
  - coughing up blood or blood clots
  - vomiting blood or if your vomit looks like coffee-grounds
  - red or black (looks like tar) stools
  - menstrual bleeding that is heavier than normal
  - any unusual or heavy bleeding
- **blood clots, stroke, heart attack, and chest pain.** Get emergency help right away if you get:

- swelling or pain in your arms or legs
  - shortness of breath
  - feel lightheaded or faint
  - sweating more than usual
  - numbness or weakness of your face, arm or leg, especially on one side of your body
  - sudden confusion, trouble speaking or understanding
  - sudden trouble seeing in one or both eyes
  - sudden trouble walking
  - dizziness, loss of balance or coordination
  - a sudden severe headache
- **wound healing problems.** Wound healing problems have happened in some people who take COMETRIQ. Tell your healthcare provider if you plan to have any surgery before or during treatment with COMETRIQ.
    - You should stop taking COMETRIQ at least 3 weeks before planned surgery.
    - Your healthcare provider should tell you when you may start taking COMETRIQ again after surgery.
  - **high blood pressure (hypertension).** Hypertension is common with COMETRIQ and can be severe. Your healthcare provider will check your blood pressure before starting COMETRIQ and regularly during treatment with COMETRIQ. If needed, your healthcare provider may prescribe medicine to treat your high blood pressure. Tell your healthcare provider if you develop severe headaches, nose bleeds, tiredness or confusion, vision changes, chest pain, trouble breathing, irregular heartbeat, or blood in your urine.
  - **severe jaw bone problems (osteonecrosis).** Your healthcare provider should examine your mouth before you start and during treatment with COMETRIQ. Tell your dentist that you are taking COMETRIQ. It is important for you to practice good mouth care during treatment with COMETRIQ. Tell your healthcare provider right away if you develop any symptoms of jaw problems including: jaw pain, toothache, or sores on your gums.
  - **diarrhea.** Diarrhea is common with COMETRIQ and can be severe. If needed, your healthcare provider may prescribe medicine to treat your diarrhea. Tell your healthcare provider right away, if you have frequent loose, watery bowel movements.
  - **a skin problem called hand-foot skin reaction.** Hand-foot skin reactions are common with COMETRIQ and can be severe. Tell your healthcare provider right away if you have rashes, redness, pain, swelling, or blisters on the palms of your hands or soles of your feet.
  - **protein in your urine and possible kidney problems.** Symptoms may include swelling in your hands, arms, legs, or feet.
  - **Reversible Posterior Leukoencephalopathy Syndrome (RPLS).** A condition called reversible posterior leukoencephalopathy syndrome can happen during treatment with COMETRIQ. Tell your healthcare provider right away if you have headaches, seizures, confusion, changes in vision, or problems thinking.
  - **decreased calcium level in your blood (hypocalcemia).** COMETRIQ can cause you to have a decreased amount of calcium in your blood. Your healthcare provider will do blood tests to check you for this problem and give you calcium if needed. **Tell your healthcare provider right away if you get any of the following signs or symptoms:**
    - muscle stiffness or muscle spasms
    - numbness or tingling in your fingers, toes, or around your mouth
    - seizures
    - sudden weight gain
    - swelling of your arms, hands, legs, and ankles

Your healthcare provider may change your dose, temporarily stop, or permanently stop treatment with COMETRIQ if you have certain side effects.

**The most common side effects of COMETRIQ include:**

- diarrhea
- redness, swelling or pain in your mouth or throat, or mouth sores. Tell your healthcare provider if these symptoms prevent you from eating or drinking.
- weight loss
- decreased appetite
- nausea
- tiredness
- hair color turning lighter
- change in taste
- pain in your abdomen
- constipation

**The most common abnormal blood test results with COMETRIQ include:**

- increased liver function blood tests
- decreased white blood cell counts
- increased levels of enzyme called alkaline phosphatase in the blood (test for liver or bone problems)
- decreased calcium and phosphate blood levels
- decreased platelet counts
- increased bilirubin blood levels

COMETRIQ may cause fertility problems in females and males, which may affect your ability to have children. Talk to your healthcare provider if you have concerns about fertility.

These are not all the possible side effects of COMETRIQ.

Call your doctor for medical advice about side effects. You may report side effects to FDA at 1-800-FDA-1088.

#### **How should I store COMETRIQ?**

- Store COMETRIQ at room temperature between 68°F to 77°F (20°C to 25°C).

**Keep COMETRIQ and all medicines out of the reach of children.**

#### **General information about the safe and effective use of COMETRIQ.**

Medicines are sometimes prescribed for purposes other than those listed in a Patient Information leaflet. Do not use COMETRIQ for a condition for which it was not prescribed. Do not give COMETRIQ to other people, even if they have the same symptoms you have. It may harm them. You can ask your pharmacist or healthcare provider for information about COMETRIQ that is written for health professionals.

#### **What are the ingredients in COMETRIQ?**

**Active ingredient:** cabozantinib

**Inactive ingredients:** silicified microcrystalline cellulose, croscarmellose sodium, sodium starch glycolate, fumed silica, and stearic acid.

Capsule shells: Grey gelatin capsule shells contain black iron oxide and titanium dioxide. Swedish orange gelatin capsule shells contain red iron oxide, and titanium dioxide.

The printing ink contains shellac glaze, black iron oxide, N-butyl alcohol, isopropyl alcohol, propylene glycol, and ammonium hydroxide.

Manufactured for Exelixis, Inc. Alameda, CA 94502

For more information, go to [www.cometriq.com](http://www.cometriq.com) or call 1-855-292-3935.

This Patient Information has been approved by the U.S. Food and Drug Administration.

Revised: 08/2023